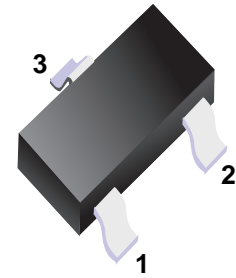


■ Dual Surface Mount Switching Diode



■ Simplified outline(SOT-323)

■ Features

- Fast Switching Speed
- Ultra-Small Surface Mount Package
- For General Purpose Switching Applications
- High Conductance

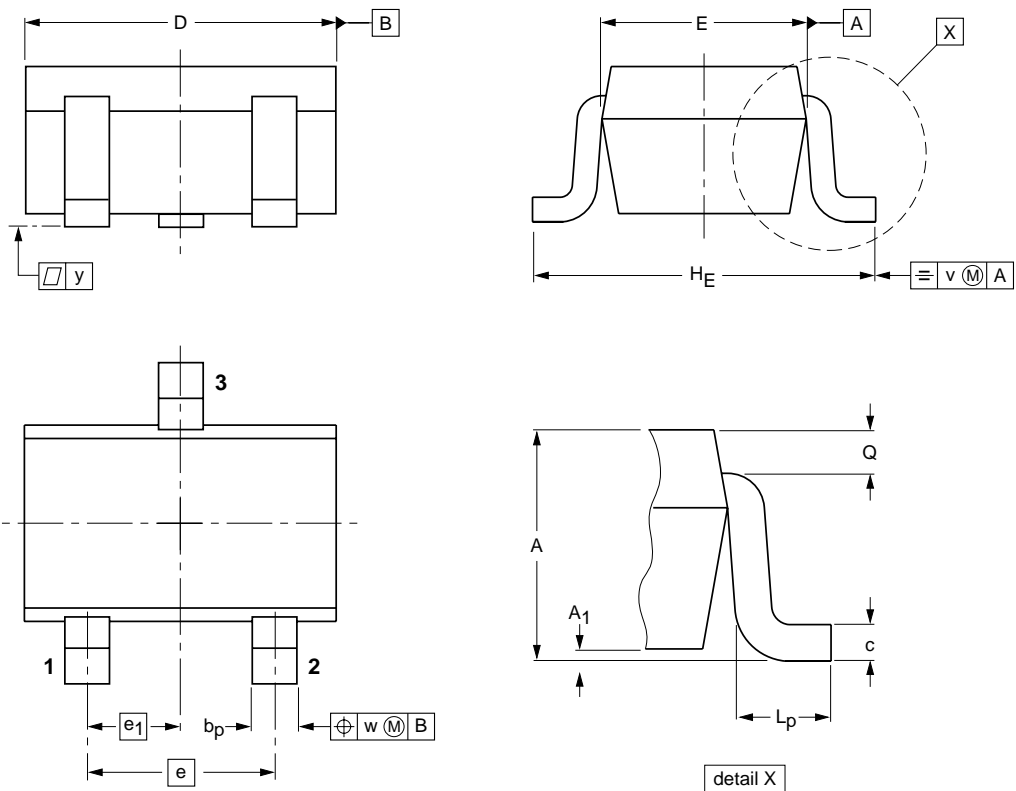
■ Absolute Maximum Ratings Ta = 25°C

Parameter	Symbol	Rating	Unit
Non-Repetitive Peak Reverse Voltage	V_{RM}	100	V
Peak Repetitive Reverse Voltage	V_{RRM}	75	V
Working Peak Reverse Voltage	V_{RWM}		
DC Blocking Voltage	V_R		
RMS Reverse Voltage	$V_{R(RMS)}$	53	V
Average Rectified Output Current	I_o	150	mA
Forward Continuous Current	I_{FM}	300	mA
Non-Repetitive Peak Forward Surge Current @ t = 1.0 μ s	I_{FSM}	2.0	A
@ t = 1.0s		1.0	
Power Dissipation	P_d	200	mW
Thermal Resistance Junction to Ambient Air	$R_{\theta JA}$	625	K/W
Operating and Storage Temperature Range	T, T_{STG}	-65 to +150	°C

■ Electrical Characteristics Ta = 25°C

Parameter	Symbol	Testconditions	Min	Typ	Max	Unit
Reverse Breakdown Voltage	$V_{(BR)R}$	$I_F = 2.5 \mu A$	75			V
Forward Voltage	V_F	$I_F = 1.0mA$			0.715	V
		$I_F = 10mA$			0.855	
		$I_F = 50mA$			1.0	
		$I_F = 150mA$			1.25	
Peak Reverse Current	I_{RM}	$V_R = 75V$			2.5	μA
		$V_R = 75V, T_j = 150^\circ C$			50	μA
		$V_R = 25V, T_j = 150^\circ C$			30	μA
		$V_R = 20V$			25	nA
Junction Capacitance	C_j	$V_R = 0, f = 1.0MHz$			2	pF
Reverse Recovery Time	t_{rr}	$I_F = I_R = 10mA, I_{rr} = 0.1 \times I_R, R_L = 100 \Omega$			4	ns

■ SOT-323



DIMENSIONS (mm are the original dimensions)

UNIT	A	A ₁ max	b _p	c	D	E	e	e ₁	H _E	L _p	Q	v	w
mm	1.1 0.8	0.1	0.4 0.3	0.25 0.10	2.2 1.8	1.35 1.15	1.3	0.65	2.2 2.0	0.45 0.15	0.23 0.13	0.2	0.2